

SPEC:

A. Material:

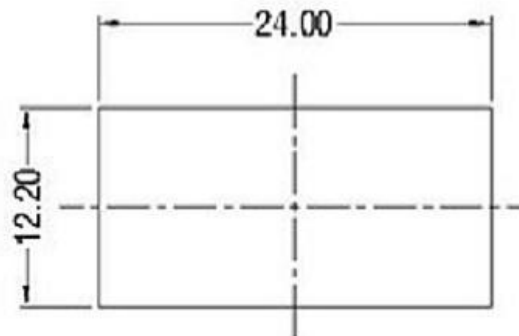
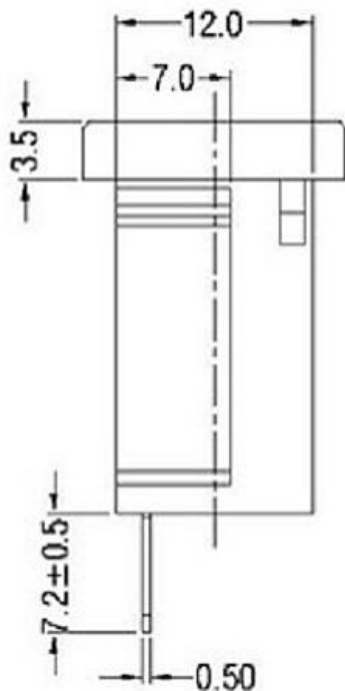
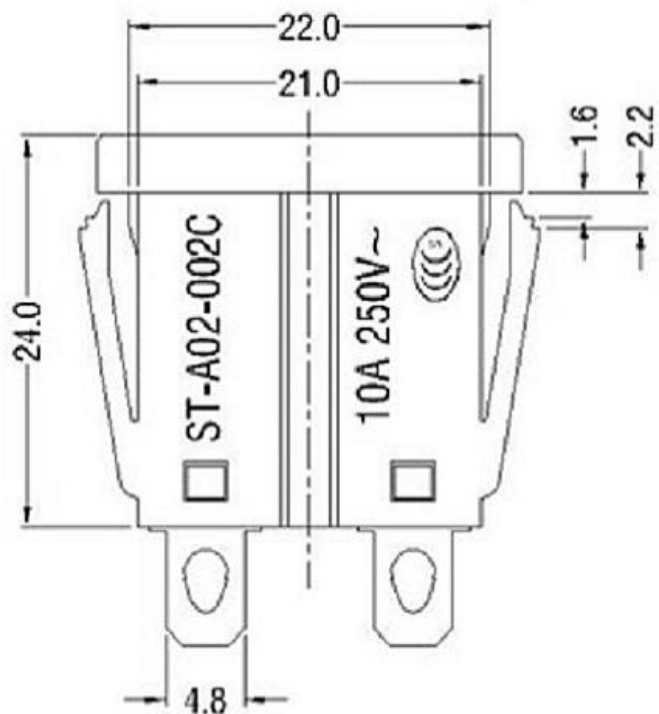
- 1. Housing: PA66 WITH G/F10%
- 2. Terminal: COPPER ALLOY, TIN PLATED

B. Electrical Characteristics:

- 1. Rating: 10A 250V~
- 2. Electric Strength: AC 2,000 V FOR ONE MINUTE
- 3. Insulation Resistance: 100MΩ MIN, AT 500V DC

C. Approvals:

CCC



PANEL CUT-OUT

				普通公差 COMMON TOLERANCE:	 东莞市高迪电子有限公司				
				UP TO 5 ±0.20					
				ABOVE 5 TO 30 ±0.30	绘图	林晓良	核对	型号	
				ABOVE 30 ±0.50	日期	19. 08. 12	核准	料号	KD-AC电源插座
REV.	DATE	REVISION DESCRIPTION	ISSUE	ANGULAR ±5°	日期		核准	料号	